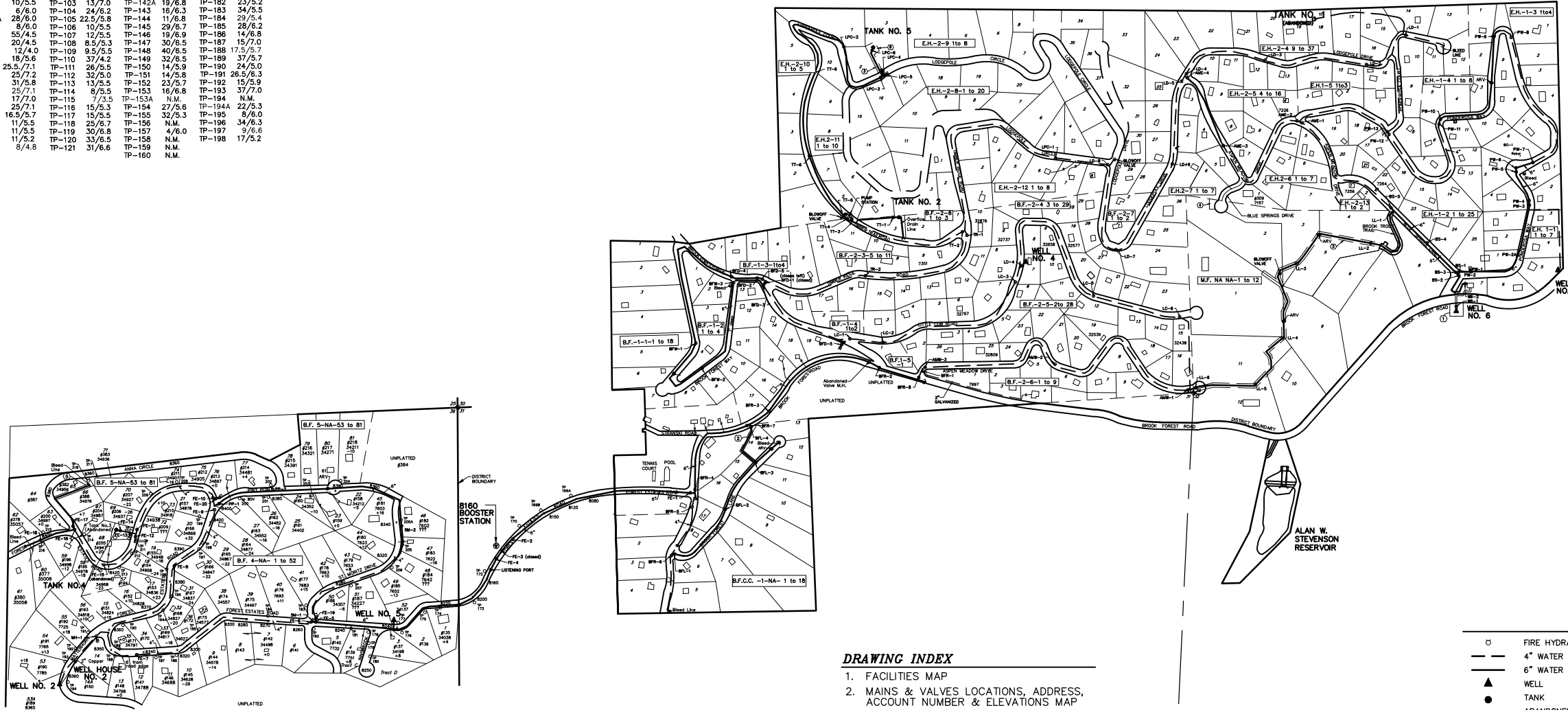
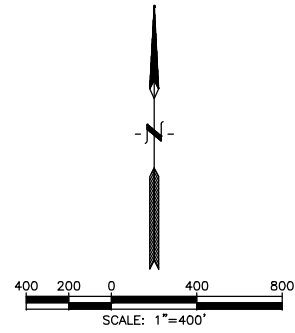


WATERLINE OFFSET AND DEPTH FROM TELEPHONE POLES

TP NO.	MAIN LOCATION	TP NO.	MAIN LOCATION	TP NO.	MAIN LOCATION	TP NO.	MAIN LOCATION	TP NO.	MAIN LOCATION	TP NO.	MAIN LOCATION	TP NO.	MAIN LOCATION
H-1	19/14.0	TP-40	29/6.8	TP-81	10/5.8	TP-122	34/6.7	TP-161	N.M.	TP-199	55/6.6		
TP-1	12/7.5	TP-41	28.5/6.8	TP-82	8/5.5	TP-123	N.M.	TP-162	N.M.	TP-200	11/5.5		
TP-2	16/5.8	TP-42	14.5/6.3	TP-83	33/5.3	TP-124	33/5.8	TP-163	N.M.	TP-201	23/6.8		
TP-3	19/4.5	TP-43	19/5.5	TP-84	34/5.5	TP-125	18/6.0	TP-164	N.M.	TP-202	23/6.8		
TP-4	12/5.5	TP-44	24/6.0	TP-85	8.5/5.1	TP-126	35/5.6	TP-165	N.M.	TP-203	23/5.5		
TP-5	26/5.3	TP-45	34/7.0	TP-86	13/5.0	TP-127	12/5.0	TP-166	N.M.	TP-204	36/5.8		
TP-6	10/4.0	TP-46	26/7.0	TP-87	25/5.0	TP-128	18/6.0	TP-167	26/6.0	TP-205	10/5.2		
TP-7	10/5.5	TP-47	102/7.0	TP-88	0	TP-129	7/6.0	TP-168	32/6.3	TP-206	5/5.1		
TP-8	10/5.0	TP-48	37/7.0	TP-89	34.5/5.5	TP-130	26/6.2	TP-169	20/6.5	TP-207	12/5.0		
TP-9	15.5/4.5	TP-49	22.6/6.3	TP-90	43/5.5	TP-131	19/6.0	TP-169A	17/6.0	TP-208	30/6.4		
TP-10A	18.0/5.0	TP-50	18/6.3	TP-91	32/4.8	TP-132	18/6.0	TP-169B	19/5.9	TP-209	27/7.0		
TP-10	22/5.0	TP-51	29/3.5	TP-92	15/4.5	TP-133	13/5.5	TP-170	11/6.1	TP-210	42/6.9		
TP-11	12/4.6	TP-52	24/6.0	TP-93	21/6.5	TP-134	25/6.0	TP-171	0	TP-211	17/7.8		
TP-12	47/5.5	TP-53	17/6.3	HI-2	8/4.5	TP-135	32/6.0	TP-172	12/6.2	TP-212	21.8/7.2		
TP-13	38/5.0	TP-54	19/5.5	TP-94	15/7.5	TP-136A	13/7.5	TP-173	24/6.2	TP-213	19/7.2		
TP-14	32/7.0	TP-55	12/4.5	TP-95	18/8	TP-136	13/7.5	TP-174	16/6.1	TP-214	37/6.8		
TP-15	28.0/7.0	TP-56	25.5/4.5	TP-96	13/6.9	TP-137	62/5.0	TP-175	19/6.0	TP-215	22/7.0		
TP-16	7.0/7.0	TP-57	23/5.8	TP-97	8/7.1	TP-138	54/7.0	TP-176	20/6.1	TP-216	34/7.0		
TP-16A	N.M.	TP-58	21/6.3	TP-98	15/6.0	TP-139	22/7.0	TP-177	28/6.3				
TP-18	40/5.5	TP-59	22/6.3	TP-99	15/6.0	TP-140	29/7.1	TP-178	19/6.0				
TP-19	8/5.0	TP-60	23/6.8	TP-100	15/5.5	TP-141	21/7.0	TP-179	N.M.				
TP-20	12/5.0	TP-61	17/6.8	TP-101	30.5/5.2	TP-141A	18/7.0	TP-180	N.M.				
TP-21	24.5/5.5	TP-62	22/5.8	TP-102	28.5/7.0	TP-142	97/6.9	TP-181	15.5/5.5				
TP-22	24/5.3	TP-63	10/5.5	TP-103	13/7.0	TP-142A	19/6.8	TP-182	23/5.2				
TP-23	30/5.5	TP-64	6/6.0	TP-104	24/6.2	TP-143	16/6.3	TP-183	34/5.5				
TP-24	17/5.3	TP-65A	28/6.0	TP-105	22.5/9.8	TP-144	11/6.8	TP-184	23/5.4				
TP-25	18/5.3	TP-65	8/6.0	TP-106	10/5.5	TP-145	29/6.7	TP-185	28/6.2				
TP-26	29.5/5.5	TP-66	55/4.5	TP-107	12/5.5	TP-146	19/6.9	TP-186	14/6.8				
TP-27	19/5.5	TP-67	20/4.5	TP-108	8.5/5.3	TP-147	30/6.5	TP-187	15/7.0				
TP-28	14/6.0	TP-68	12/4.0	TP-109	9.5/5.5	TP-148	40/6.5	TP-188	17/5.7				
TP-29	33/6.8	TP-69	18/5.6	TP-110	37/4.2	TP-149	32/6.5	TP-189	37/5.5				
TP-30	32.5/6.8	TP-70	25.5/7.1	TP-111	26/9.5	TP-150	14/5.9	TP-190	24/5.0				
TP-31	12/6.0	TP-71	25/7.2	TP-112	32/5.0	TP-151	14/5.8	TP-191	26.5/6.3				
TP-32		TP-72	31/5.8	TP-113	13/5.5	TP-152	23/5.7	TP-192	15/5.9				
TP-33	41/5.2	TP-73	25/7.1	TP-114	8/5.5	TP-153	16/6.8	TP-193	37/7.0				
TP-34	26.5/5.0	TP-74	17/7.0	TP-115	7/3.5	TP-153A	N.M.	TP-194	N.M.				
TP-34A	23/6.0	TP-75	29/7.1	TP-116	15/5.3	TP-154	27/5.6	TP-194A	22/5.3				
TP-35	13/5.5	TP-76	16.5/5.7	TP-117	15/5.5	TP-155	32/5.3	TP-195	8/6.0				
TP-36	18/6.0	TP-77	11/5.5	TP-118	25/6.7	TP-156	N.M.	TP-196	34/6.3				
TP-37	N.M.	TP-78	11/5.5	TP-119	30/6.8	TP-157	4/6.0	TP-197	5/6.6				
TP-38	N.M.	TP-79	11/5.2	TP-120	33/6.5	TP-158	N.M.	TP-198	17/5.2				
TP-39	26.5/7.0	TP-80	8/4.8	TP-121	31/6.6	TP-159	N.M.	TP-199					
				TP-160		TP-160	N.M.						



DRAWING INDEX

1. FACILITIES MAP
2. MAINS & VALVES LOCATIONS, ADDRESS, ACCOUNT NUMBER & ELEVATIONS MAP
3. MAINS & VALVES LOCATIONS, ADDRESS, ACCOUNT NUMBER & ELEVATIONS MAP
4. CONTOUR MAP
5. CONTOUR MAP
6. PRESSURE CONTOUR MAP
7. PRESSURE CONTOUR MAP

NOTE:

1. STREET ELEVATIONS ARE AT THE ROAD SERVICE.
2. HOUSE ELEVATIONS ARE MEASURED FROM STREET SURFACE ABOVE SERVICE LINE TAP TO HOUSE FOUNDATION.
3. TOPOGRAPHY OBTAINED FROM THE MERIDIAN HILLS AND CONIFER USGS QUADRANGLES. CONTOUR INTERVAL=40'

LEGEND

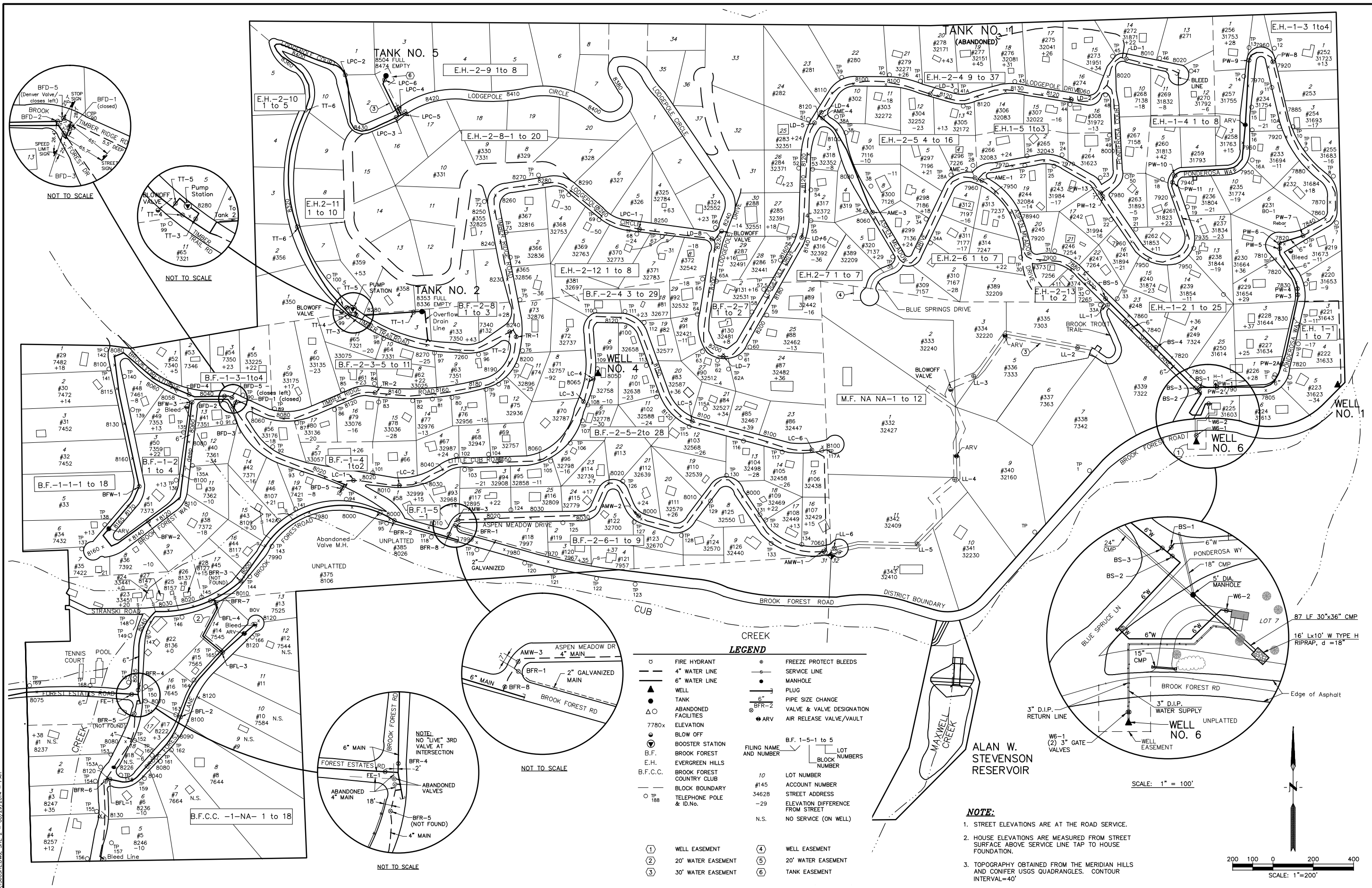
○	FIRE HYDRANT	●	FREEZE PROTECT BLEEDS
—	4" WATER LINE	—	SERVICE LINE
—	6" WATER LINE	●	MANHOLE
▲	WELL	—	PLUG
●	TANK	—	PIPE SIZE CHANGE
—	ABANDONED FACILITIES	⊗	VALVE & VALVE DESIGNATION
	ELEVATION	●	AIR RELEASE VALVE/VAULT
7780x			
○	BLOW OFF		
●	BOOSTER STATION		
B.F.	BROOK FOREST		
E.H.	EVERGREEN HILLS		
B.F.C.C.	BROOK FOREST COUNTRY CLUB		
—	BLOCK BOUNDARY		
○ TP 168	TELEPHONE POLE & ID.No.		

	FILING NAME AND NUMBER		B.F. 1-5-1 to 5
			LOT BLOCK NUMBERS
			LOT NUMBER
		10	LOT NUMBER
		#145	ACCOUNT NUMBER
		34628	STREET ADDRESS
		-29	ELEVATION DIFFERENCE FROM STREET
		N.S.	NO SERVICE (ON WELL)

①	WELL EASEMENT	④	WELL EASEMENT
②	20' WATER EASEMENT	⑤	20' WATER EASEMENT
③	30' WATER EASEMENT	⑥	TANK EASEMENT

M:\1360\DWG\1360SITE.DWG, SITE 1 - 08/29/2014 - PAH

WRC ENGINEERING, INC. 950 SOUTH CHERRY STREET SUITE 404 DENVER, COLORADO 80246 PHONE NO: (303) 757-8513 FAX NO: (303) 758-3208	DESIGNED DPK DRAWN EJM CHECKED DPK REVISED MAS AS-BUILT PAH	NO. BY DATE 4 JILH 3/99 5 JILH 5/00 6 MAS 11/03 7 PAH 8/2014	REVISION DESCRIPTION MAP UPDATE/RENAME VALVES MAP UPDATE PER E.G. COMMENTS MAP UPDATE MAP UPDATE ALONG PONDEROSA WAY	BROOK FOREST WATER DISTRICT	WATER DISTRIBUTION SYSTEM MAP	FACILITIES MAP	PROJECT NUMBER 1360 DRAWING NUMBER 1
--	---	--	--	--	--------------------------------------	-----------------------	---



WRC ENGINEERING, INC.
950 SOUTH CHERRY STREET
SUITE 404
DENVER, COLORADO 80246
PHONE NO: (303) 757-8513
FAX NO: (303) 758-3208

DESIGNED	CHK	NO.	BY	DATE	REVISION DESCRIPTION
DRAWN	DPK	5	JLH	5/00	MAP UPDATE PER E.G. COMMENTS
CHECKED	DPK	6	MAS	11/03	MAP UPDATE
REVISED	DPK	7	PAH	8/2014	MAP UPDATE ALONG PONDEROSA WAY
AS-BUILT	DPK	8	PAH	8/2014	MAP UPDATE ALONG PONDEROSA WAY

BROOK FOREST WATER DISTRICT

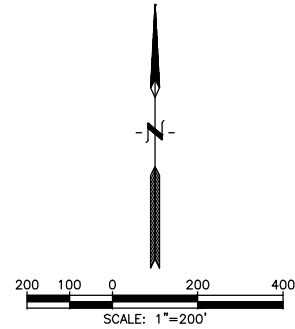
WATER DISTRIBUTION SYSTEM MAP

MAINS AND VALVES LOCATION, ADDRESS, ACCOUNT NUMBER AND ELEVATIONS MAP

PROJECT NUMBER 1360
DRAWING NUMBER 2

WATERLINE OFFSET AND DEPTH FROM TELEPHONE POLES

TP NO.	MAIN LOCATION	TP NO.	MAIN LOCATION	TP NO.	MAIN LOCATION	TP NO.	MAIN LOCATION	TP NO.	MAIN LOCATION	TP NO.	MAIN LOCATION
H-1	19/14.0	TP-40	29/6.8	TP-81	10/5.8	TP-122	34/6.7	TP-161	N.M.	TP-199	55/6.6
TP-1	12/7.5	TP-41	28.5/6.8	TP-82	8/5.5	TP-123	N.M.	TP-162	N.M.	TP-200	11/5.5
TP-2	16/5.8	TP-42	14.5/6.3	TP-83	33/5.3	TP-124	33/5.8	TP-163	N.M.	TP-201	23/6.6
TP-3	19/4.5	TP-43	19/5.5	TP-84	34/5.5	TP-125	18/6.0	TP-164	N.M.	TP-202	23/6.8
TP-4	12/5.5	TP-44	24/6.0	TP-85	8.5/5.1	TP-126	35/5.6	TP-165	N.M.	TP-203	23/5.5
TP-5	26/5.3	TP-45	34/7.0	TP-86	13/5.0	TP-127	12/5.0	TP-166	N.M.	TP-204	36/5.8
TP-6	10/4.0	TP-46	25/7.0	TP-87	25/5.0	TP-128	18/5.0	TP-167	26/6.0	TP-205	10/5.2
TP-7	10/5.5	TP-47	102/7.0	TP-88	0	TP-129	7/6.0	TP-168	32/6.3	TP-206	5/5.1
TP-8	10/5.0	TP-48	37/7.0	TP-89	34.5/5.5	TP-130	26/6.2	TP-169	20/6.5	TP-207	12/5.0
TP-9	15.5/4.5	TP-49	22/6/6.3	TP-90	43/5.5	TP-131	19/6.0	TP-169A	17/6.0	TP-208	30/6.4
TP-10A	18/0/5.0	TP-50	18/6.3	TP-91	32/4.8	TP-132	18/6.0	TP-169B	19/5.9	TP-209	27/7.0
TP-10	22/5.0	TP-51	29/3.5	TP-92	15/4.5	TP-133	13/5.5	TP-170	11/6.1	TP-210	42/6.9
TP-11	12/4.6	TP-52	24/6.0	TP-93	21/6.5	TP-134	25/6.0	TP-171	0	TP-211	17/7.6
TP-12	47/5.5	TP-53	17/6.3	H-2	8/4.5	TP-135	32/6.0	TP-172	12/6.2	TP-212	213/7.2
TP-13	38/5.0	TP-54	19/5.5	TP-94	15/7.5	TP-136A	13/7.5	TP-173	24/6.2	TP-213	19/7.2
TP-14	32/7.0	TP-55	12/4.5	TP-95	18/8	TP-136	13/7.5	TP-174	16/6.1	TP-214	37/6.8
TP-15	28/0/7.0	TP-56	25.5/4.5	TP-96	13/6.9	TP-137	62/5.0	TP-175	19/6.0	TP-215	22/7.0
TP-16	7.0/7.0	TP-57	23/5.8	TP-97	8/7.1	TP-138	54/7.0	TP-176	20/6.1	TP-216	34/7.0
TP-16A	N.M.	TP-58	21/6.3	TP-98	15/6.0	TP-139	22/7.0	TP-177	28/6.3		
TP-18	40/5.5	TP-59	22/6.3	TP-99	15/6.0	TP-140	29/7.1	TP-178	19/6.0		
TP-19	6/5.0	TP-60	23/6.8	TP-100	15/5.5	TP-141	21/7.0	TP-179	N.M.		
TP-20	12/5.0	TP-61	17/6.8	TP-101	30.5/5.2	TP-141A	18/7.0	TP-180	N.M.		
TP-21	24.5/5.5	TP-62	22/5.8	TP-102	29.5/7.0	TP-142	97/6.9	TP-181	19.5/5.5		
TP-22	24/5.3	TP-63	10/5.5	TP-103	13/7.0	TP-142A	19/6.8	TP-182	23/5.2		
TP-23	30/5.5	TP-64	6/6.0	TP-104	24/6.2	TP-143	16/6.3	TP-183	34/5.5		
TP-24	17/5.3	TP-65A	28/6.0	TP-105	22.5/5.8	TP-144	11/6.8	TP-184	29/5.4		
TP-25	18/5.3	TP-65	8/6.0	TP-106	10/5.5	TP-145	29/6.7	TP-185	28/6.2		
TP-26	29.5/5.5	TP-66	55/4.5	TP-107	12/5.5	TP-146	19/6.9	TP-186	14/6.8		
TP-27	19/5.5	TP-67	20/4.5	TP-108	8.5/5.3	TP-147	30/6.5	TP-187	15/7.0		
TP-28	14/6.0	TP-68	12/4.0	TP-109	9.5/5.5	TP-148	40/6.5	TP-188	17.5/5.7		
TP-29	33/6.8	TP-69	18/5.6	TP-110	37/4.2	TP-149	32/6.5	TP-189	37/5.7		
TP-30	32.5/6.8	TP-70	25.5/7.1	TP-111	26/5.5	TP-150	14/5.9	TP-190	24/5.0		
TP-31	12/6.0	TP-71	20/7.2	TP-112	32/5.0	TP-151	14/5.8	TP-191	26.5/6.3		
TP-32	11/5.8	TP-72	31/5.8	TP-113	13/5.5	TP-152	23/5.7	TP-192	15/5.9		
TP-33	41/5.2	TP-73	25/7.1	TP-114	8/5.5	TP-153	16/6.8	TP-193	37/7.0		
TP-34	26.5/5.0	TP-74	17/7.0	TP-115	7/3.5	TP-153A	N.M.	TP-194	N.M.		
TP-35	23/5.0	TP-75	22/7.1	TP-116	15/5.3	TP-154	27/6.6	TP-194A	22/5.3		
TP-36	13/5.5	TP-76	16.5/5.7	TP-117	15/5.5	TP-155	32/5.3	TP-195	8/6.0		
TP-37	N.M.	TP-77	11/5.5	TP-118	25/6.7	TP-156	N.M.	TP-196	34/6.3		
TP-38	N.M.	TP-78	11/5.5	TP-119	30/6.8	TP-157	4/6.0	TP-197	9/6.6		
TP-39	26.5/7.0	TP-79	11/5.2	TP-120	33/6.5	TP-158	N.M.	TP-198	17/5.2		
		TP-80	8/4.8	TP-121	31/6.6	TP-159	N.M.				
				TP-160	N.M.						



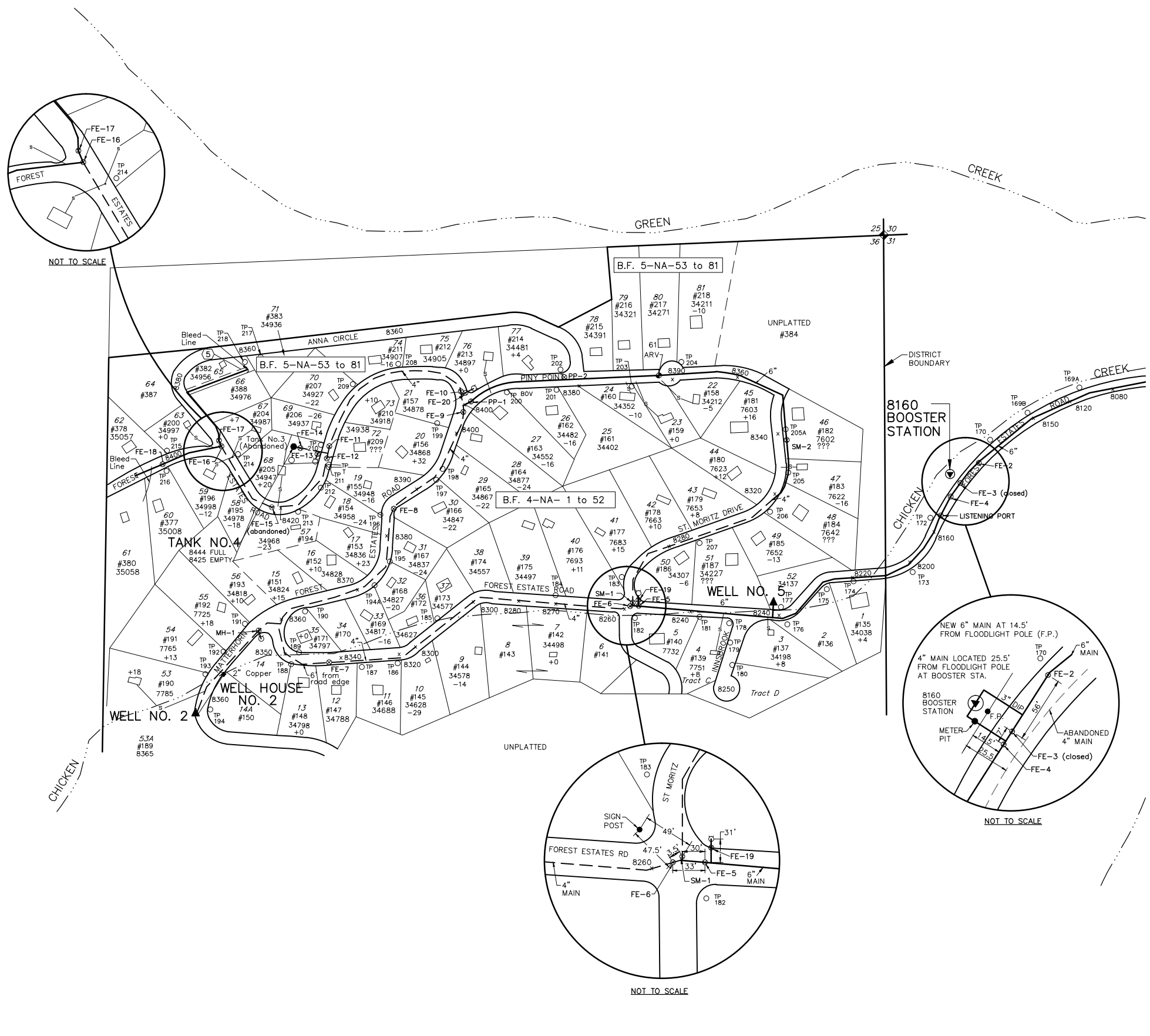
- NOTE:**
- STREET ELEVATIONS ARE AT THE ROAD SERVICE.
 - HOUSE ELEVATIONS ARE MEASURED FROM STREET SURFACE ABOVE SERVICE LINE TAP TO HOUSE FOUNDATION.
 - TOPOGRAPHY OBTAINED FROM THE MERIDIAN HILLS AND CONIFER USGS QUADRANGLES. CONTOUR INTERVAL=40'

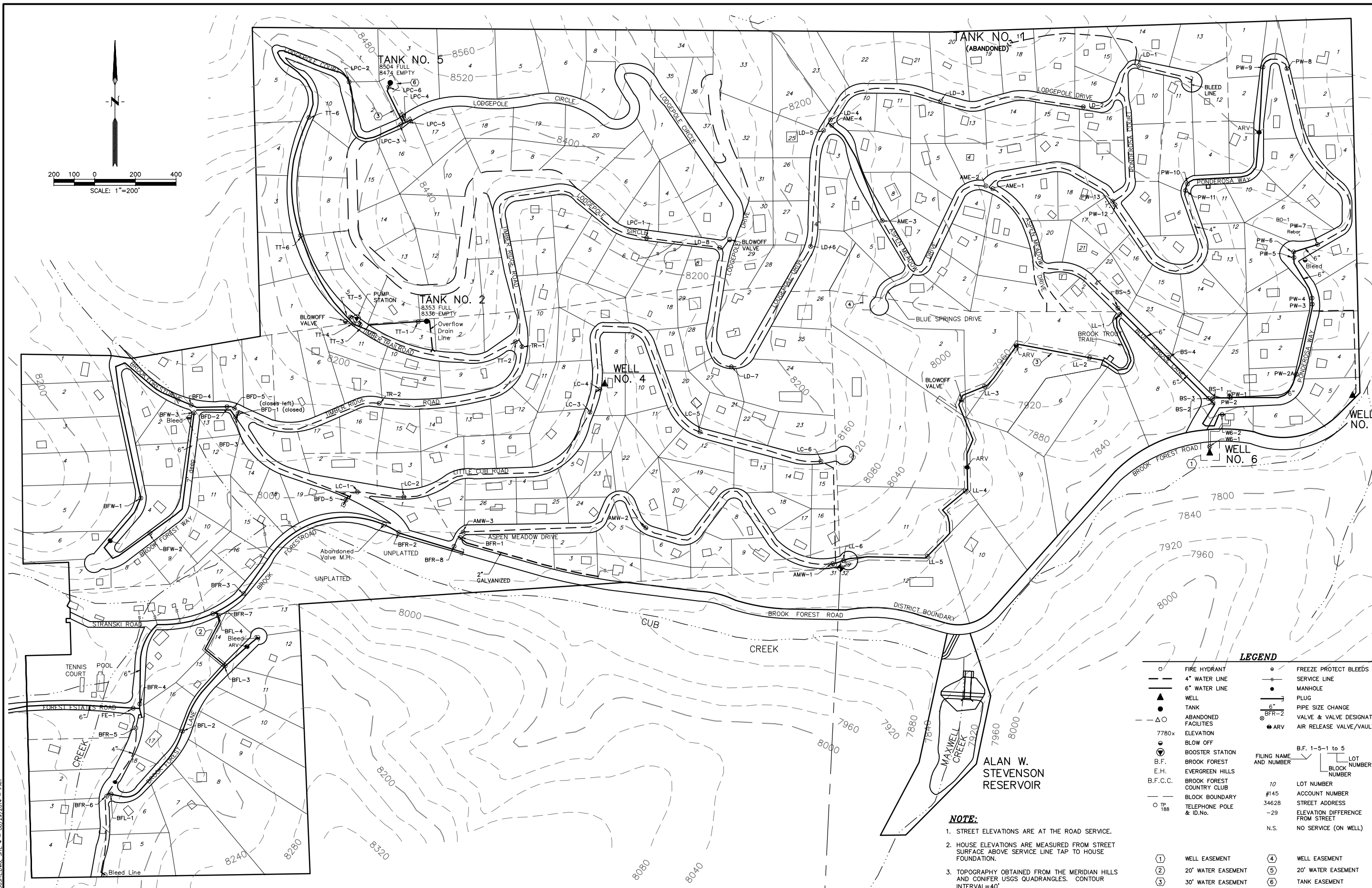
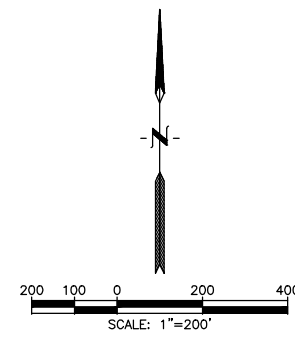
LEGEND

○	FIRE HYDRANT	○	FREEZE PROTECT BLEEDS
—	4" WATER LINE	—	SERVICE LINE
—	6" WATER LINE	●	MANHOLE
▲	WELL	—	PLUG
●	TANK	—	6" PIPE SIZE CHANGE
○	ABANDONED FACILITIES	○	VALVE & VALVE DESIGNATION
7780x	ELEVATION	●	ARV
○	BLOW OFF		
○	BOOSTER STATION		
B.F.	BROOK FOREST		
E.H.	EVERGREEN HILLS		
B.F.C.C.	BROOK FOREST COUNTRY CLUB		
—	BLOCK BOUNDARY		
○	TELEPHONE POLE & ID.No.		

○	WELL EASEMENT	④	WELL EASEMENT
②	20' WATER EASEMENT	⑤	20' WATER EASEMENT
③	30' WATER EASEMENT	⑥	TANK EASEMENT

	FILING NAME	B.F. 1-5-1 to 5
	AND NUMBER	LOT NUMBER
		BLOCK NUMBER
		NUMBER
	10	LOT NUMBER
	#145	ACCOUNT NUMBER
	34628	STREET ADDRESS
	-29	ELEVATION DIFFERENCE FROM STREET
	N.S.	NO SERVICE (ON WELL)





LEGEND

- | | | | |
|----------|---------------------------|---|---------------------------|
| ○ | FIRE HYDRANT | ○ | FREEZE PROTECT BLEEDS |
| — | 4" WATER LINE | — | SERVICE LINE |
| — | 6" WATER LINE | ● | MANHOLE |
| ▲ | WELL | — | PLUG |
| ● | TANK | — | PIPE SIZE CHANGE |
| —△— | ABANDONED FACILITIES | — | VALVE & VALVE DESIGNATION |
| 7780x | ELEVATION | ○ | BFR-2 |
| ○ | BLOW OFF | ● | ARV |
| ○ | BOOSTER STATION | | |
| B.F. | BROOK FOREST | | |
| E.H. | EVERGREEN HILLS | | |
| B.F.C.C. | BROOK FOREST COUNTRY CLUB | | |
| — | BLOCK BOUNDARY | | |
| ○ TP 188 | TELEPHONE POLE & ID.No. | | |
-
- | | | | |
|--|-----------------|-------|----------------------------------|
| | B.F. 1-5-1 to 5 | | LOT |
| | AND NUMBER | | BLOCK |
| | | | NUMBERS |
| | | | NUMBER |
| | | 10 | LOT NUMBER |
| | | #145 | ACCOUNT NUMBER |
| | | 34628 | STREET ADDRESS |
| | | -29 | ELEVATION DIFFERENCE FROM STREET |
| | | N.S. | NO SERVICE (ON WELL) |
-
- | | | | |
|---|--------------------|---|--------------------|
| ① | WELL EASEMENT | ④ | WELL EASEMENT |
| ② | 20' WATER EASEMENT | ⑤ | 20' WATER EASEMENT |
| ③ | 30' WATER EASEMENT | ⑥ | TANK EASEMENT |

NOTE:

- STREET ELEVATIONS ARE AT THE ROAD SERVICE.
- HOUSE ELEVATIONS ARE MEASURED FROM STREET SURFACE ABOVE SERVICE LINE TAP TO HOUSE FOUNDATION.
- TOPOGRAPHY OBTAINED FROM THE MERIDIAN HILLS AND CONIFER USGS QUADRANGLES. CONTOUR INTERVAL=40'

M:\360\DWG\1360SITE.DWG, SITE 4 - 08/29/2014 - PAH

WRC ENGINEERING, INC.
 950 SOUTH CHERRY STREET
 SUITE 404
 DENVER, COLORADO 80246
 PHONE NO: (303) 757-8513
 FAX NO: (303) 758-3208

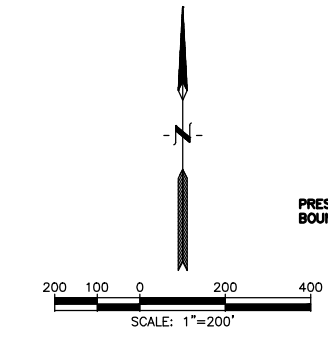
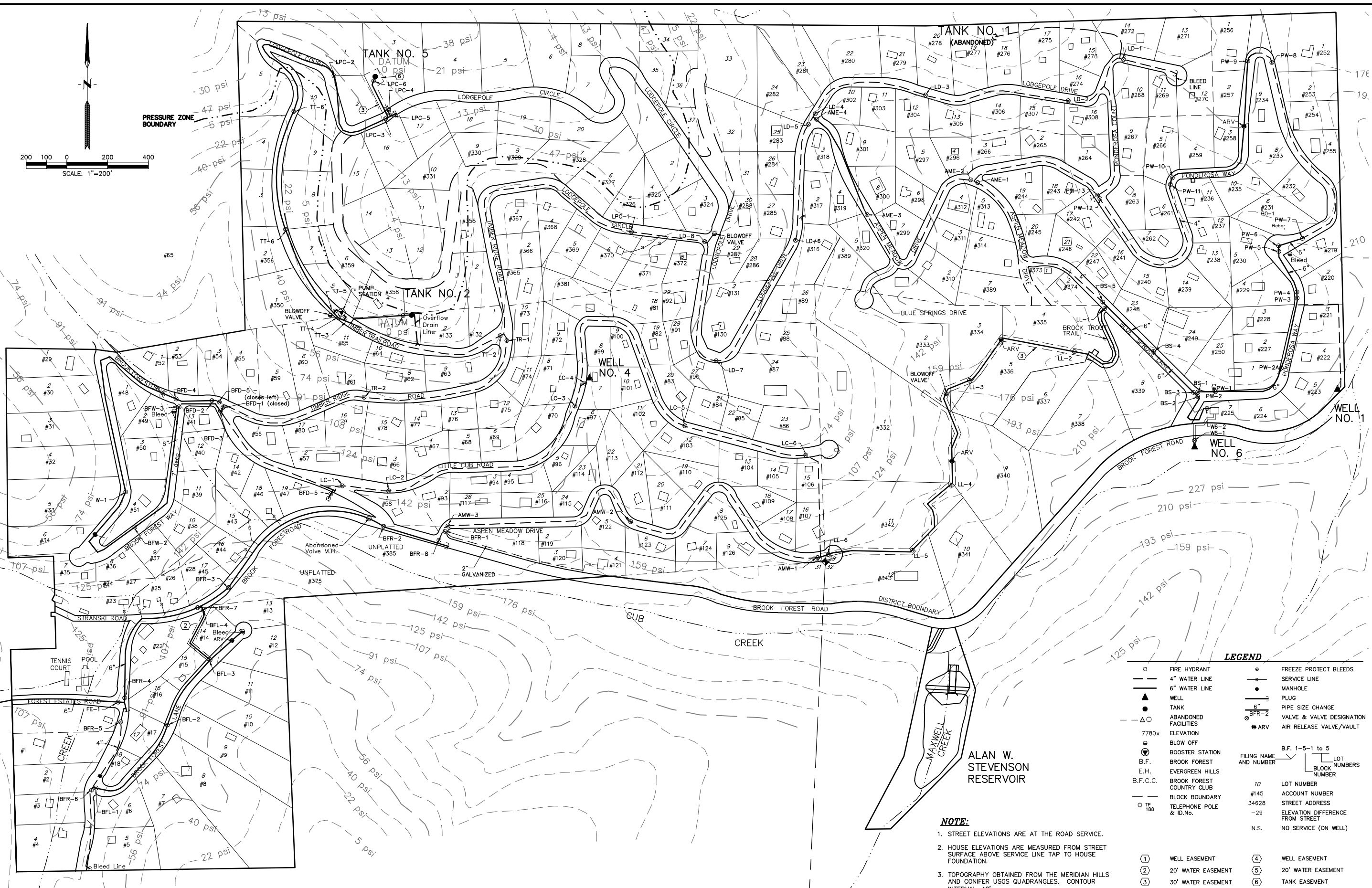
NO.	BY	DATE	REVISION DESCRIPTION
4	JLH	3/99	MAP UPDATE/RENAME VALVES
5	JLH	5/00	MAP UPDATE PER E.G. COMMENTS
6	MAS	11/03	MAP UPDATE
7	PAH	8/2014	MAP UPDATE ALONG PONDEROSA WAY

BROOK FOREST WATER DISTRICT

WATER DISTRIBUTION SYSTEM MAP

CONTOUR MAP

PROJECT NUMBER
1360
DRAWING NUMBER
4



LEGEND

○	FIRE HYDRANT	○	FREEZE PROTECT BLEEDS
—	4" WATER LINE	—	SERVICE LINE
—	6" WATER LINE	●	MANHOLE
▲	WELL	—	PLUG
●	TANK	—	PIPE SIZE CHANGE
—	ABANDONED FACILITIES	○	VALVE & VALVE DESIGNATION
7780x	ELEVATION	●	ARV
○	BLOW OFF		
●	BOOSTER STATION		
B.F.	BROOK FOREST		
E.H.	EVERGREEN HILLS		
B.F.C.C.	BROOK FOREST COUNTRY CLUB		
—	BLOCK BOUNDARY		
○ TP 188	TELEPHONE POLE & ID.No.		

	B.F. 1-5-1 to 5		LOT
	AND NUMBER		BLOCK NUMBERS
			NUMBER
		10	LOT NUMBER
		#145	ACCOUNT NUMBER
		34628	STREET ADDRESS
		-29	ELEVATION DIFFERENCE FROM STREET
		N.S.	NO SERVICE (ON WELL)

①	WELL EASEMENT	④	WELL EASEMENT
②	20' WATER EASEMENT	⑤	20' WATER EASEMENT
③	30' WATER EASEMENT	⑥	TANK EASEMENT

NOTE:

- STREET ELEVATIONS ARE AT THE ROAD SERVICE.
- HOUSE ELEVATIONS ARE MEASURED FROM STREET SURFACE ABOVE SERVICE LINE TAP TO HOUSE FOUNDATION.
- TOPOGRAPHY OBTAINED FROM THE MERIDIAN HILLS AND CONIFER USGS QUADRANGLES. CONTOUR INTERVAL=40'

WRC ENGINEERING, INC.
 950 SOUTH CHERRY STREET
 SUITE 404
 DENVER, COLORADO 80246
 PHONE NO: (303) 757-8513
 FAX NO: (303) 758-3208

NO.	BY	DATE	REVISION DESCRIPTION
4	JLH	3/99	MAP UPDATE/RENAME VALVES
5	JLH	5/00	MAP UPDATE PER E.G. COMMENTS
6	MAS	11/03	MAP UPDATE
7	PAH	8/2014	MAP UPDATE ALONG PONDEROSA WAY

BROOK FOREST WATER DISTRICT

WATER DISTRIBUTION SYSTEM MAP

PRESSURE CONTOUR MAP

PROJECT NUMBER
1360
DRAWING NUMBER
6

